

Education & Medical Panels

HUGO is proud to introduce LED backlit panels that conform to both education and medical requirements. By specifying and installing Hugo backlit panels you will more than meet the lighting performance standards set for medical and education environments.

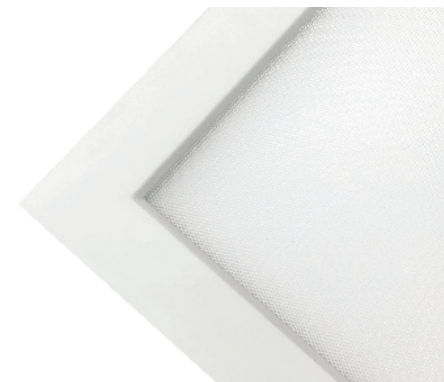
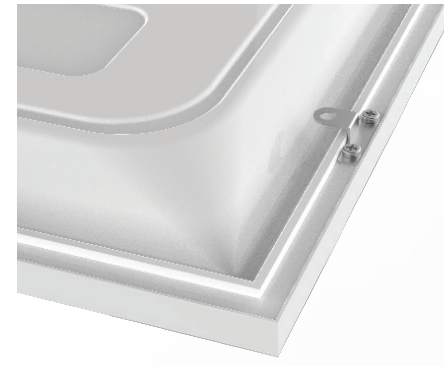
EDUCATION: The Ministry of Education has developed a series of guidelines that highlight key factors which will make an environment more comfortable for students and staff. These guidelines have been put in place to ensure lighting allows the environment to encourage learning without a negative impact from light fixtures.

MEDICAL: Hospitals have complex needs when evaluating lighting requirements, one of the most important factors is Cyanosis Observation Index (COI). Cyanosis occurs when oxygen levels in the blood are depleted and show as a blueish discolouration on the skin. Causes can be temperature, heart failure, lung disease or even smothering and are often detected from the skin colour.

The red spectrum in a light fitting increases the chance to identify this condition accurately. If the output is low, the skin appears darker and the patient may be misdiagnosed as cyanosed. If the output is too high, it may disguise the diagnosis. The Hugo medical panel with its CRI >90 and R9 > 80 significantly surpasses the minimum required and provides higher colour accuracy for safer diagnosis.

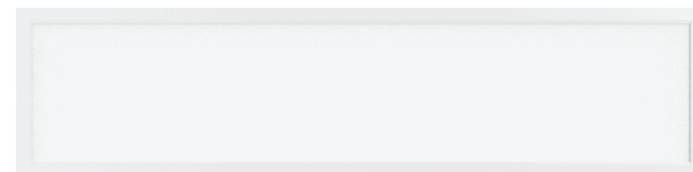
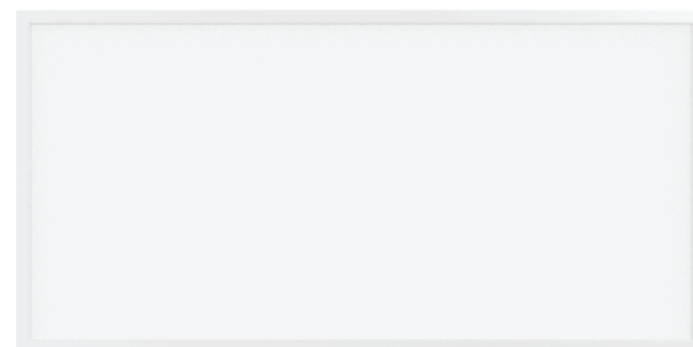
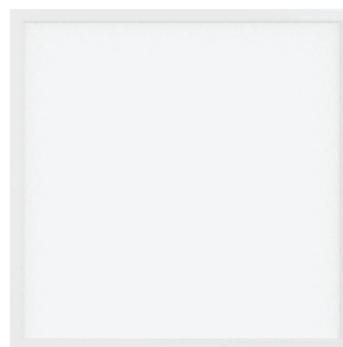
A light fitting for medical purposes (COI) must have an index <3.3 as tested against AS/NZS 1680.2.5 and the Hugo panel is tested as compliant with this standard.

Screwless back lit design increases strength and ensures no gap between the T-bar frame, while increasing the thickness of the back plate to 2.5mm ensures long-term structure stability and resulting in uniformity light output.



SKU Code	PAN412S	PAN460S	PAN430S
Wattage	50W	40W	40W
Efficiency (lm/w)	100lm/W	100lm/W	100lm/W
Colour Temp	4,000K (other available on request)		
Warranty	5 years (50,000hr)		
Chip	2835 Sanan		
Beam Angle	90°		
PFC	>0.9		
IP	Front side: IP54, Back Side: IP40		
IK	IK02		
Overload Protection	103 - 120%, Auto Resume		
Working Temp	-25° - 40°		
Relative Humidity	10% - 90%		
Life	50,000hr (L80B20@25°C)		
COI	<3.3		
CRI	CRI > 90, R9 > 80		
UGR	<19		
Input Voltage	AC: 220-240V		
Output Voltage	DC: 28-40V		
Finish	Matt White RAL9016		
Dimmable	Available (DALI, Triac, Push-Dim, 0/1-10V)		
Constant Current	50W 1200mA, 40W 1000mA		
Material	Frame: Aluminium, Diffuser: PS, Back-Plate: SPCC		
Mounting	Recess, Surface, Suspended		
Blackplate	2.5mm thickness (increased strength)		
Driver	Flicker Free		

SKU Code	PAN412S	PAN460S	PAN430S
Dimensions	595 x 1195mm	595 x 595mm	295 x 1195mm
Recess	28mm		



ACCESSORIES	PAN412S	PAN460S	PAN430S
Surface Kit	PAN412SSK	PAN460SSK	PAN430SSK
Seismic Kit	PAN3SK (2 cables)		
Lux & Motion Sensor	PANM		
Emergency	PANEM		