

Professional Outdoor lighting

Diverse light distribution for different applications

This series has a rich light distribution and adopts one-piece moulding. The combination of radiator and modular lens is a multi-functional lamp that meets many types of applications. It can be a conventional floodlight, advertising sign light, and has the light distribution of a street light.

Available in 4 sizes and 8 light distribution options 30° , 60° ,90° ,120° ,Type 2, Type 3, Type 4,tennis court
Professional outdoor area/road lighting with diverse light distribution for different applications
High brightness LED and driver combination 140lm/W

This range can be controlled via 1-10V, DMX512, DALI, PLC, Zigbee, external microwave sensor, emergency.



SKU Code	FLD050	FLD100	FLD150	FLD200	FLD240	FLD300
Input	230V					
Wattage	50W	100W	150W	200W	240W	300W
Lumen	6,500lm	13,500lm	21,500lm	28,000lm	35,000lm	43,500lm
LED Qty	64pcs	144pcs	256pcs	320pcs	400pcs	480pcs
Dimmable	Available					
Colour Temp	4,000K/5,000K/5,700K					
Warranty	5 years					
Chip	3030 SMD					
Beam Angle	Refer Below					
PFC	0.95					
Material	Aluminium & Glass					
IP	IP66					
IK	IK08					
Protection	10KV SPD					
Finish	Black/Silver					



FDL240/300
240/300W



FDL100
100W



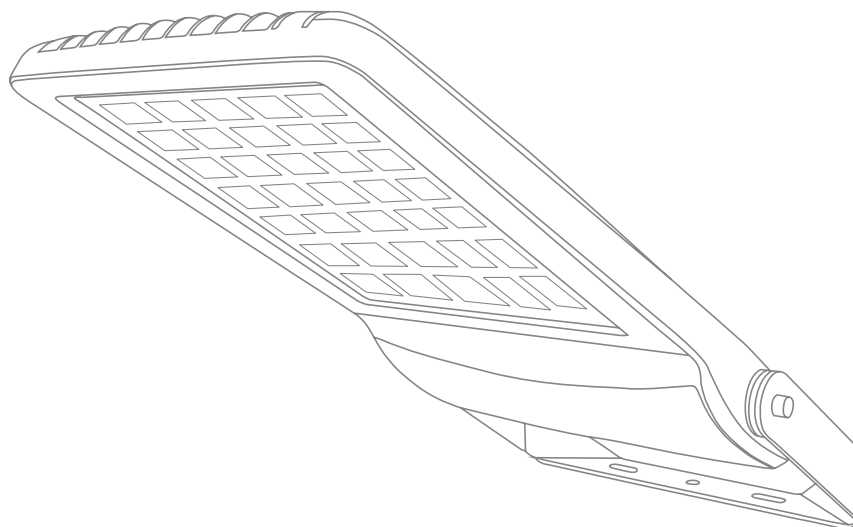
FDL050
50W



FDL150/200
150/200W

STRUCTURE

Housing Material: Die-cast Aluminium
Surface technology : Electrostatic coating
Ingress Protection: IP66
Inverse Kinematics: IK08
Corrosion resistance level: C4 rated anti-corrosion 1000H
Fire Proof level: UL94 V0
Shell Colour: Black or Gunmetal

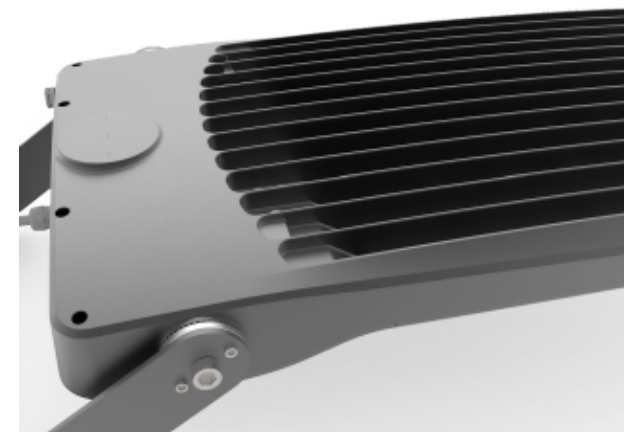


OPTICAL PARAMETERS

LED Type: 3030
Transmittance: >90%
SDCM: <5%
Flicker Factor: <15%
LED efficacy: 140lm/W
CRI: RA>80
CCT: 3,000K, 4,000K, 5,000K, 6,000K
Beam Angle: 30° , 60° , 90° , 120° , Type 2, Type 3, Type 4

POWER SUPPLY PARAMETERS

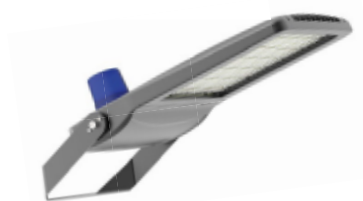
Input Voltage: 100-277V AC / 277-480V AC
Input Frequency: 50/60Hz
Power Factor: 0.95
Effectiveness: >0.93
Harmonics wave: <15%
Start Time: 0.5s
Insulation Class: Class 1
Dimming Method: 1-10V, PWM
Driver Brand: Inventronics/Sosen
Dimming Range: 10% - 100%
Surge Protection: 10KV, (20KV optional)
Power Supply type: bipolar isolation constant current waterproof switching power supply
Wattage range: 50W/100W/150W/200W/240W/300W





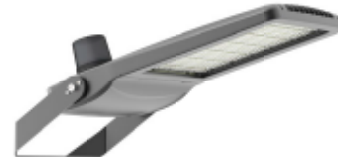
Microwave Sensor

The microwave induction switch mainly uses the principles of doppler effect, independently researches and develops the plane antenna transmitting and receiving circuit, intelligently detects the surrounding electromagnetic environment, automatically adjusts the working state, and has a built-in integral filter circuit, which can effectively suppress the interference of high-order harmonics and other clutter



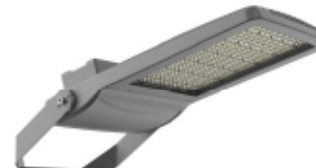
Light Control

Daylight sensor is an instrument used to detect the intensity of light. The street lamp equipped with daylight sensor can automatically turn on the light at night and off during the day



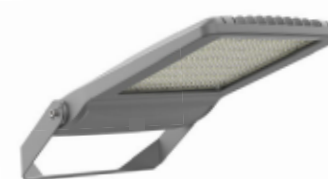
**PLC intelligent control
ZIGBEE intelligent
control**

Support standard PLC (power line carrier) and Zigbee communication protocol, which can realise intelligent control functions such as dimming lights, switching lights, and networking.



**DMX512 intelligent
control lighting**

It supports USITT DMX512/1990 general protocol, which can realise intelligent control functions such as dimming, switching and networking.



Emergency lighting

Equipped with emergency driver, IP65, emergency power 3-20W, working time:60-180minutes, emergency response time<1 second





High Lumens
140lm/W



30° / 60° / 90° / 120°
Type 2, Type 3, Type 4 / tennis court



Anti-surge 10KV
20KV optional



High CRI
RA80



1-10V dimming / Daylight Sensor /
Emergency / DALI control /
Microwave sensor



Long Lightspan
50,000hr

Aviation die-cast aluminium lamp housing

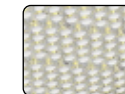
Surface treated with corrosion resistant,
Anti-rust, efficient heat dissipation



Tempered glass
4mm thick high-strength
tempered glass

NEMA interface

Reserve NEMA interface,
Scalable upgrade function



Professional lens distribution
30° / 60° / 90° / 120° /
Type 2 / Type 3 / Type 4 / tennis court

Multiple Insulation Methods

Support bracket installation &
pole installation



Adjustable bracket
90° adjustment



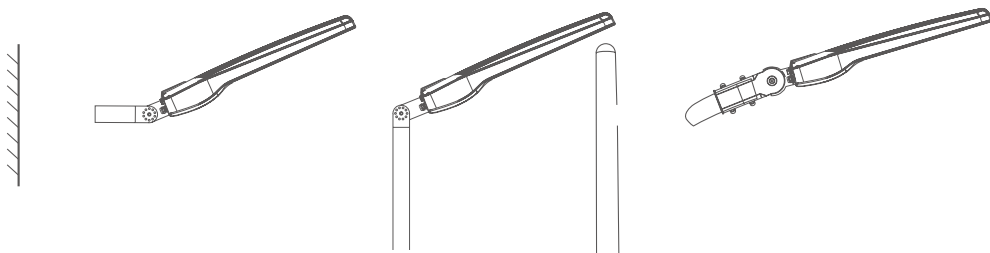
3030 high brightness LED
High Lighting efficacy, High
CRI, RA80



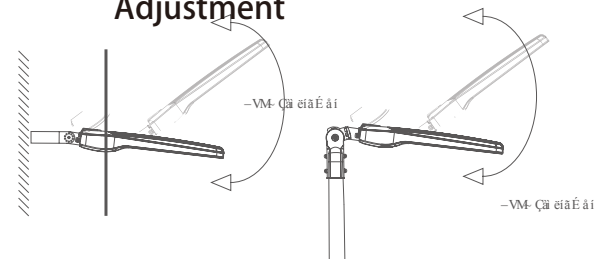
Quality Branded Power Supply
Configured with well known power supply
Reliability guaranteed



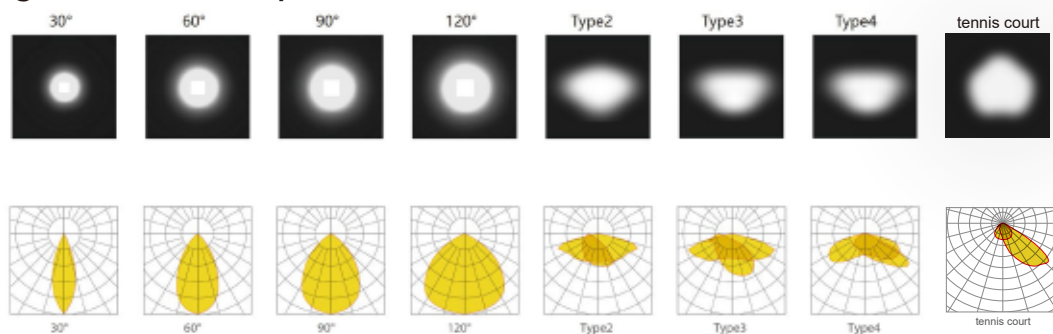
Installation Options



Adjustment

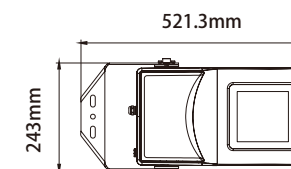
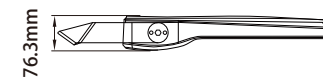


Light Distribution Options

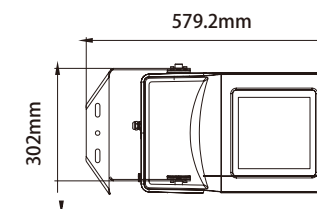
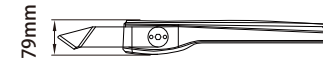


Dimensions

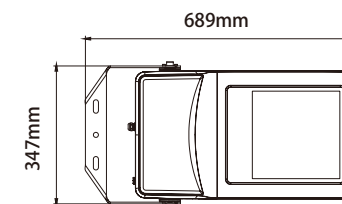
FLD050
50W



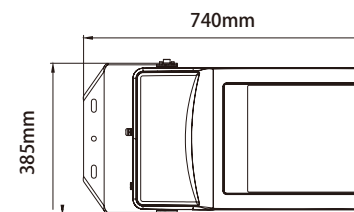
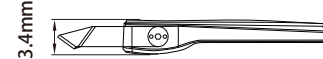
FLD100
100W



FLD150/200
150/200W



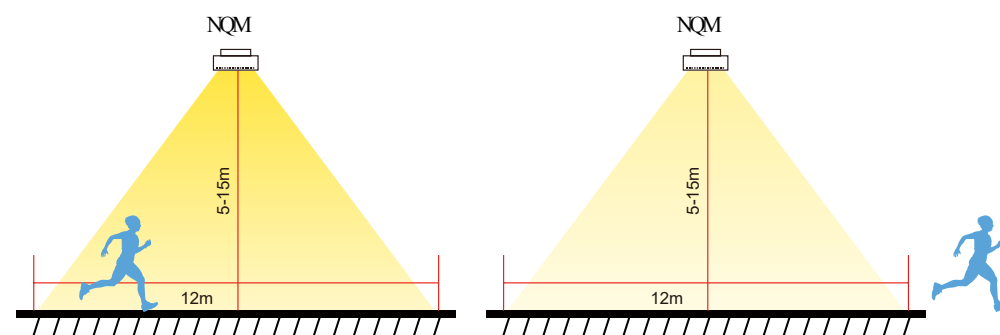
FLD240/300
240/300W





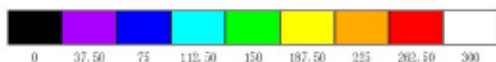
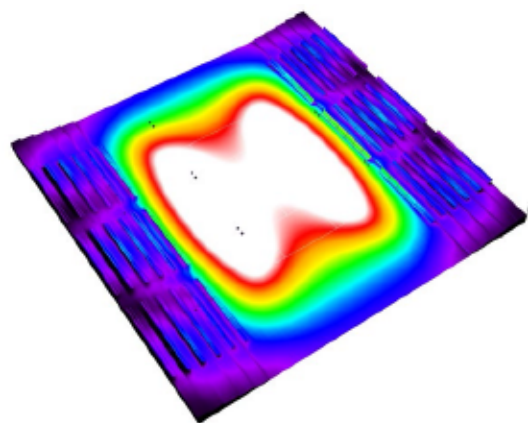
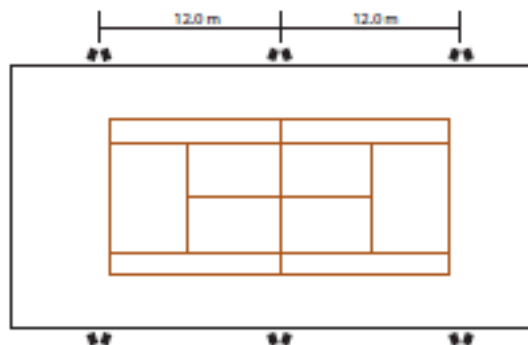
Daylight control

Daylight sensor will detect intensity of light. this will automatically turn the light on at night and turn off during the day



Microwave sensor

When a person enters the sensing area, it senses that the person is moving and automatically lights up. when exiting the area the lamp will automatically turn off after 5 seconds to 5 minutes



TENNIS

6 pole installation on both sides
8m Height
Field size: 36x18m (main competition area 30x15m)
Product: 300W

In professional tennis training grounds or clubs, there are usually multiple venues coexisting, and the lighting methods are also different. Separate lighting design needs to be combined with the specific conditions of the venue. the following schemes are commonly used standard scheme. the below is only a sample and different options are available.

Measure Standard	Main Division	Total Division
Ave illumination	502 lx	483 lx
Max Illumination	650 lx	653 lx
Min Illumination	387 lx	287 lx
U1	0.59	0.44
U2	0.77	.060

U1 = ratio min illumination to max illumination
U2 = ratio min illumination to ave illumination

